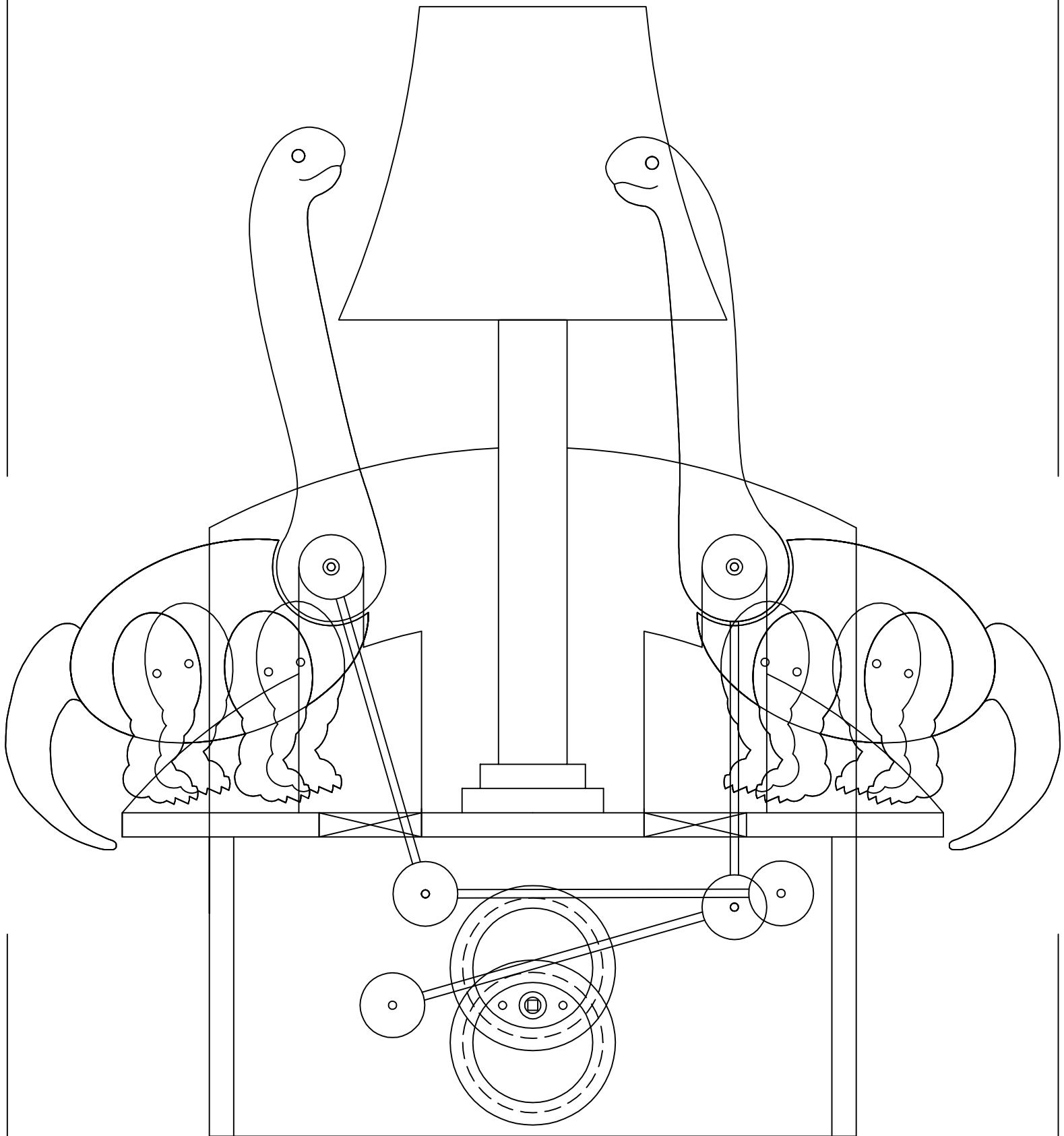


Browsing Brontos Lamp



Overall Elevation

Half Full Scale

Browsing Brontos Lamp					
	Object	Material	#	Note	Size
A	top	3/8" plywood	1		6" x 12-11/16"
B	motherboard	1/4" hardwood	1		4-5/8" h. x 9-1/4" w.
C	motor	-----	1	N1	-----
D	threaded spacer	nylon	1	N2	1/2" dia. x 1/2" long
E	vibration isolation pad	1/16" gasket stock	2		1" x 1"
F	slab leg	3/8" hardwood	2		4-5/8" h. x 5" w.
G	blocking	1/2" square dowel	4		4-5/8" long
H	axle support - large	3/8" plywood	2		per full-size plan
J	axle support - small	3/8" plywood	2		per full-size plan
K	machine screw	steel	1		1/4-20 x 1-1/4" long
L	unthreaded spacer	nylon	3	N3	1/4" dia. x 1" long
M	axle	1/8" aluminum rod	2		2-3/4" long
N	background	3/8" plywood	1		5-5/8" h. x 10" w.
P	tree base - large	3/8" plywood	1		2-3/16" dia.
Q	tree base - small	3/8" plywood	1		1-5/8" dia.
R	tail dowel	hardwood	2		1/8" dia. x 1" long
S	tree trunk	3/4" PVC pipe	1	N4	length to suit
T	light bulb socket - candelabra	-----	1		3/4" dia.
U	head/neck – front layer	1/8" plywood	2		per full-size plan
V	head/neck – back layer	3/8" plywood	2		per full-size plan
W	near leg	1/4" plywood	2		per full-size plan
X	far leg	1/4" plywood	2		per full-size plan
Y	body	1/2" plywood	2	N5	per full-size plan
Z	tail	1/4" plywood	2		per full-size plan
AA	cam disc - large	1/8" plywood	4		per full-size plan
BB	cam disc - small	5/32" plywood	2	N6	per full-size plan
CC	cam spacer	1/8" plywood	2		per full-size plan
DD	upper linkage disc	1/4" plywood	2		1" dia.
EE	glue disc	1/4" plywood	2		1" dia.
FF	middle linkage disc	1/4" plywood	2		1" dia.
GG	lower linkage disc	1/4" plywood	2		1" dia.
HH	upper linkage rod	1/8" aluminum rod	2		5-1/4" long
JJ	lower linkage rod	1/8" aluminum rod	2		5-1/2" long
KK	back	1/4" pegboard	1		4-5/8" h. x 9-1/4" w.
LL	stop bead	hardwood	2		3/8" dia.
MM	lock washer	steel	1	N7	1/4"
NN	washers used as body shims	steel or nylon	--		1/4"
PP	fender washer	steel or nylon	1		1/4" x 1" dia.
QQ	switch			N8	to suit
RR	lamp cord		1		to suit

Notes:

N1 - continuous-duty timing motor, 110V AC, 15- to 20-rpm

N2 - 1/4-20 interior threads

N3 - 9/64" interior diameter

Use one in drilling jig. Cut other two as required to serve as 1/4"-long axle bushings.

N4 - 1-1/16" outside diameter Forstner bit recommended for holes

N5 - two layers 1/4" plywood

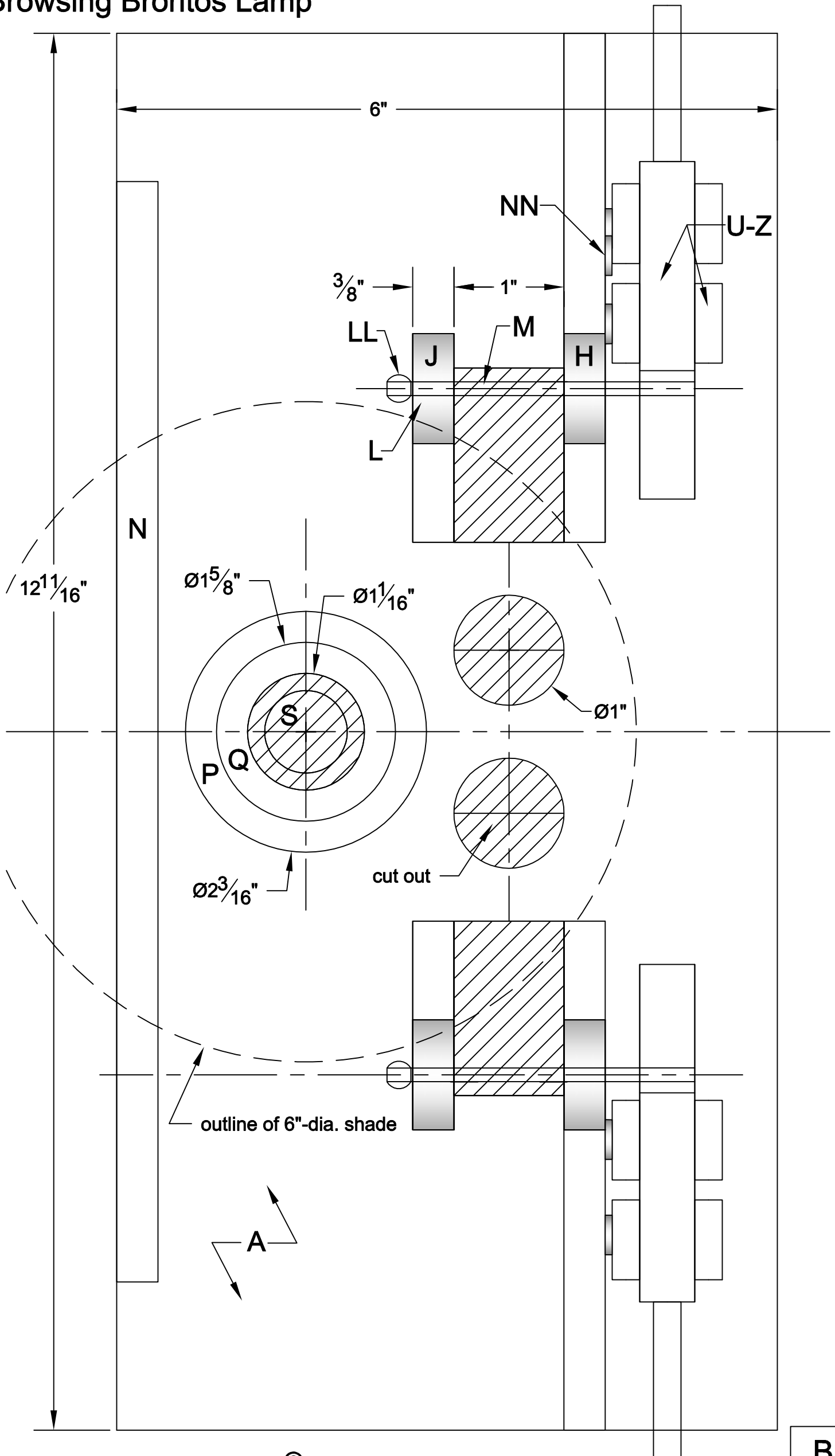
N5 - 5/32" plywood = 1/8" + 1/32" laminations

N7 - external toothed for better grip in plywood

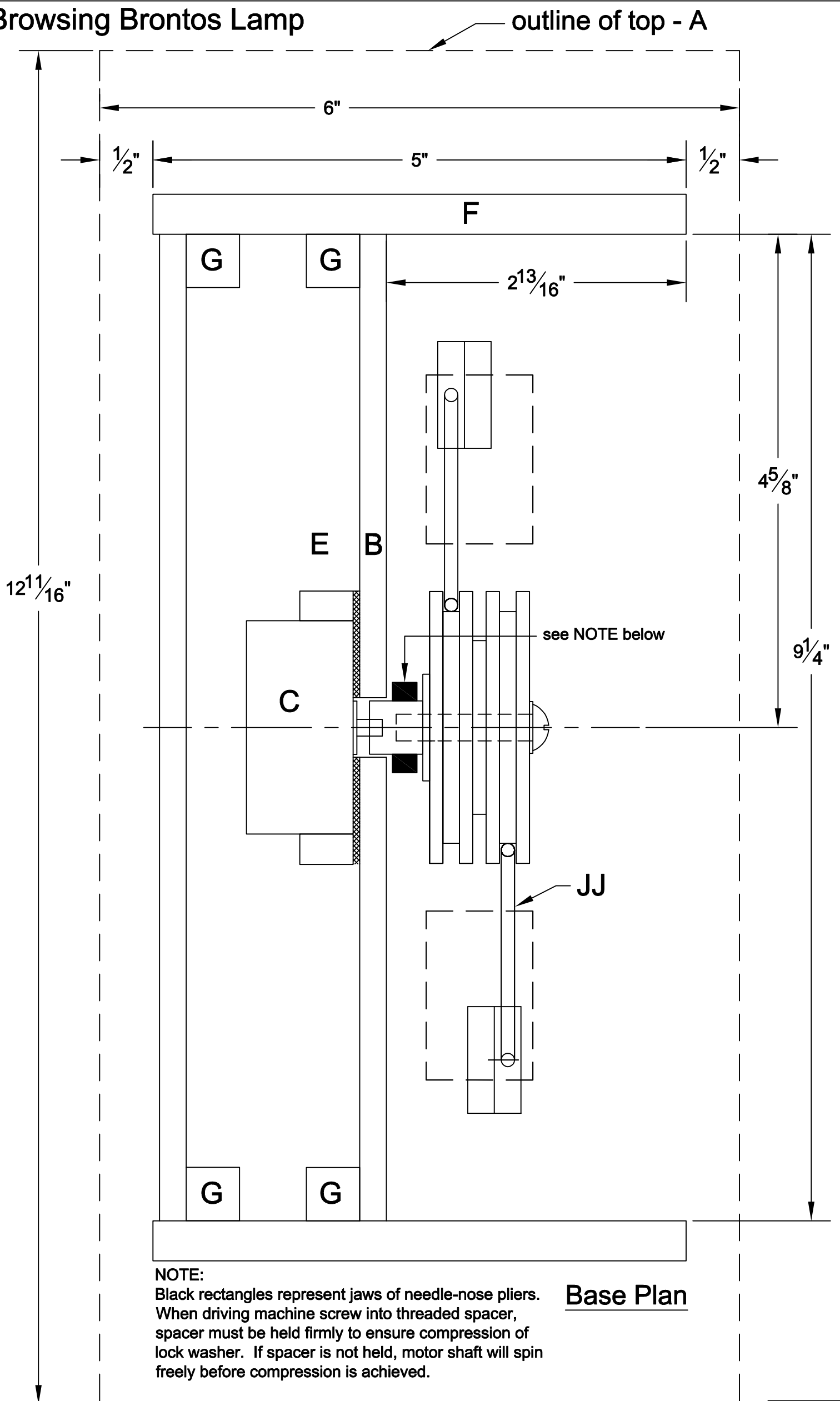
N8 - multiple options for switching:

- unswitched for use with a switched outlet
- in-line lamp cord switch
- one rotary switch on side to activate bulb and motor simultaneously
- two rotary switches on side to activate bulb and motor independently
- one 3-way rotary switch on side to activate bulb and motor independently

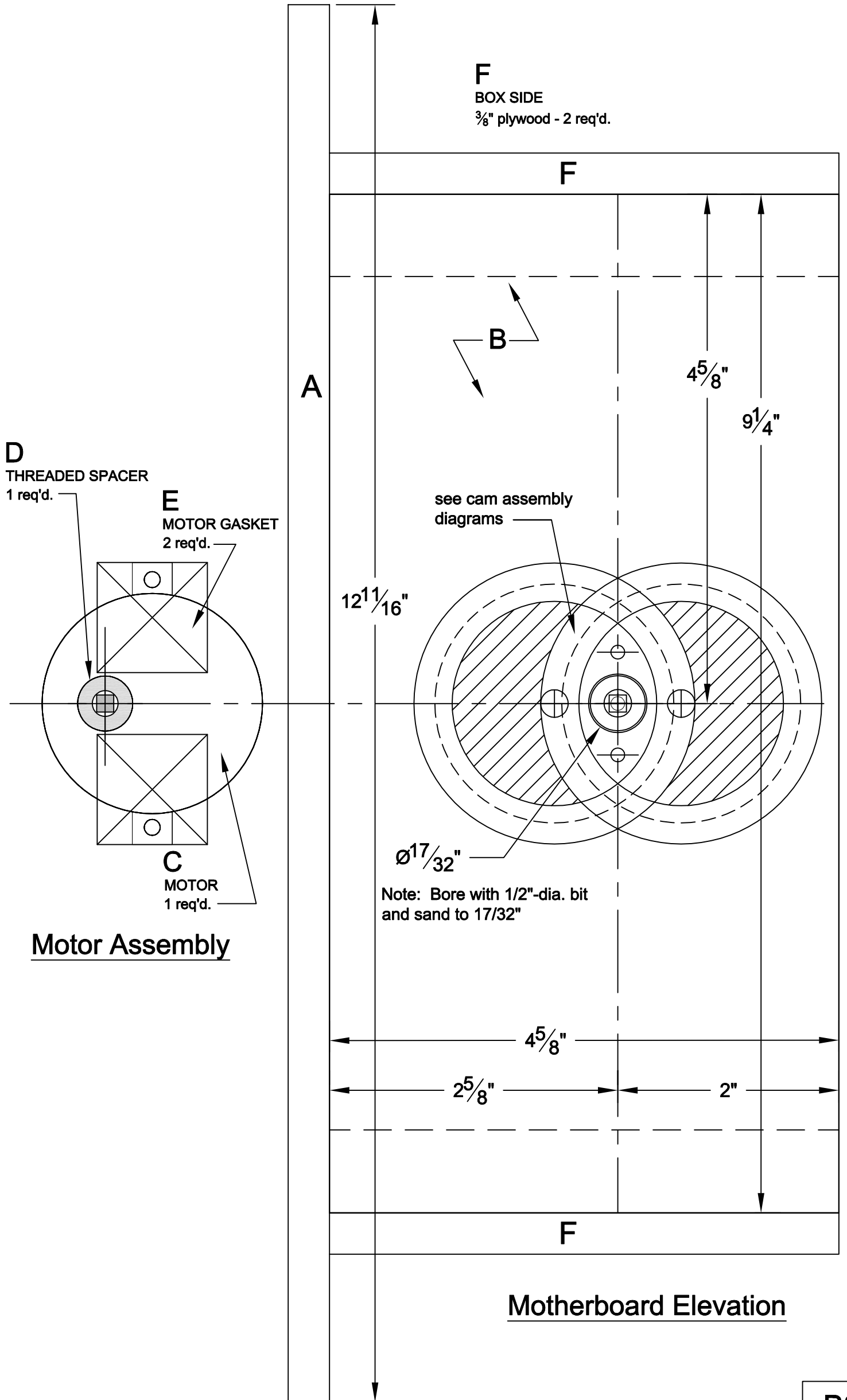
Browsing Brontos Lamp



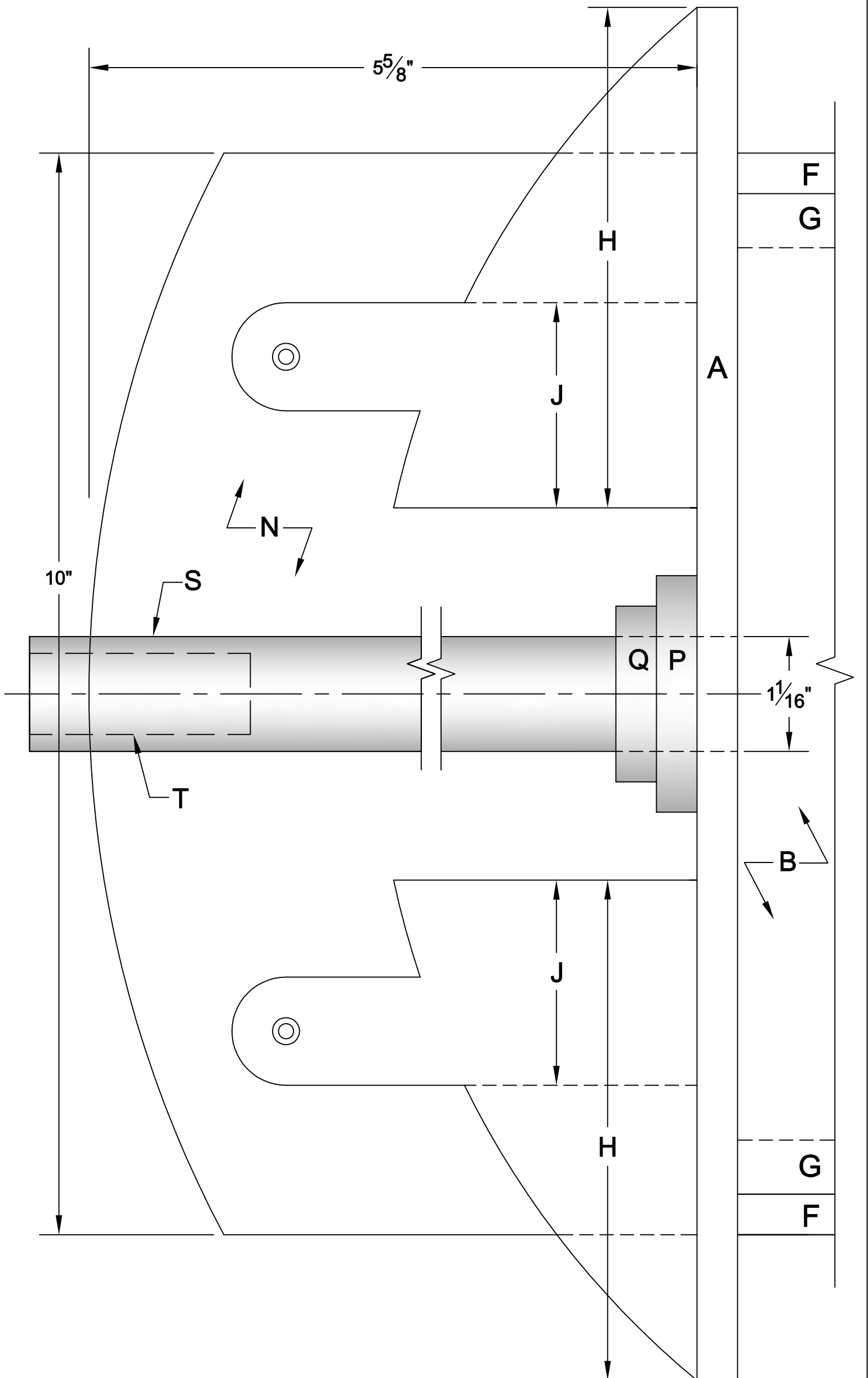
Browsing Brontos Lamp



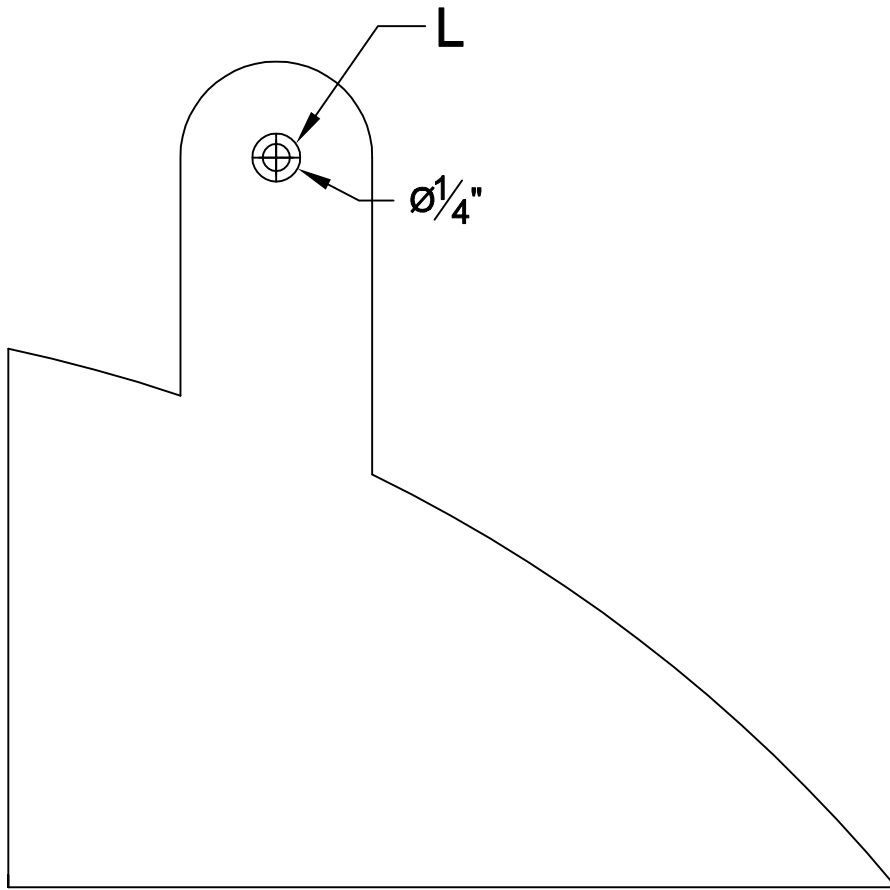
Browsing Brontos Lamp



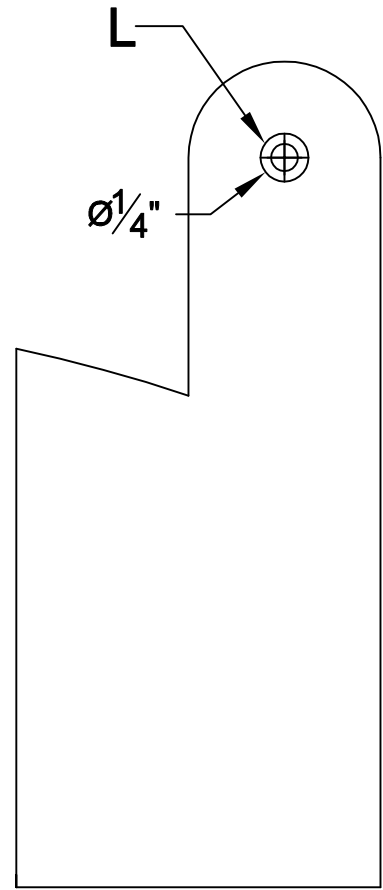
Browsing Brontos Lamp



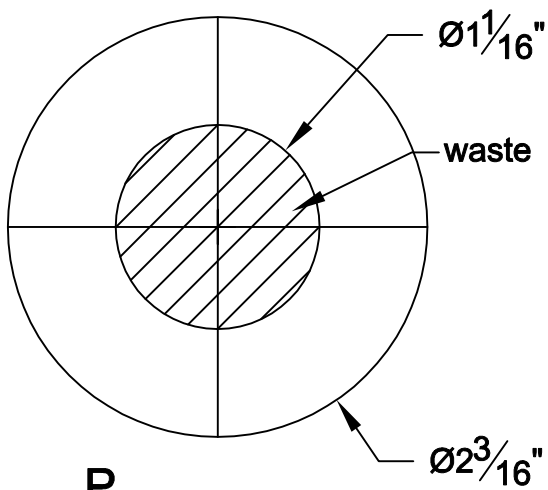
Browsing Brontos Lamp



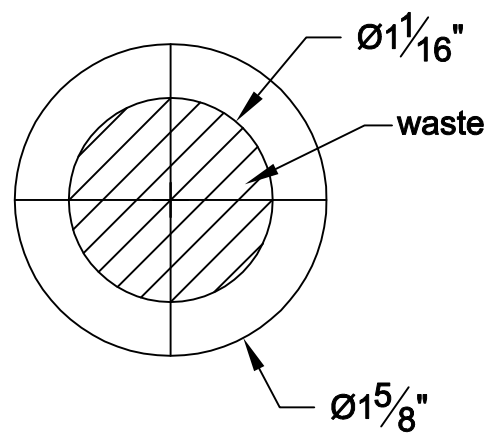
H
AXLE SUPPORT - LARGE
3/8" plywood - 2 req'd.



J
AXLE SUPPORT - SMALL
3/8" plywood - 2 req'd.



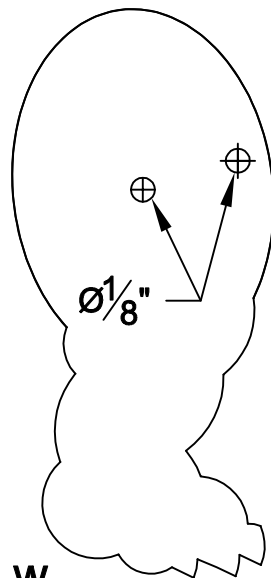
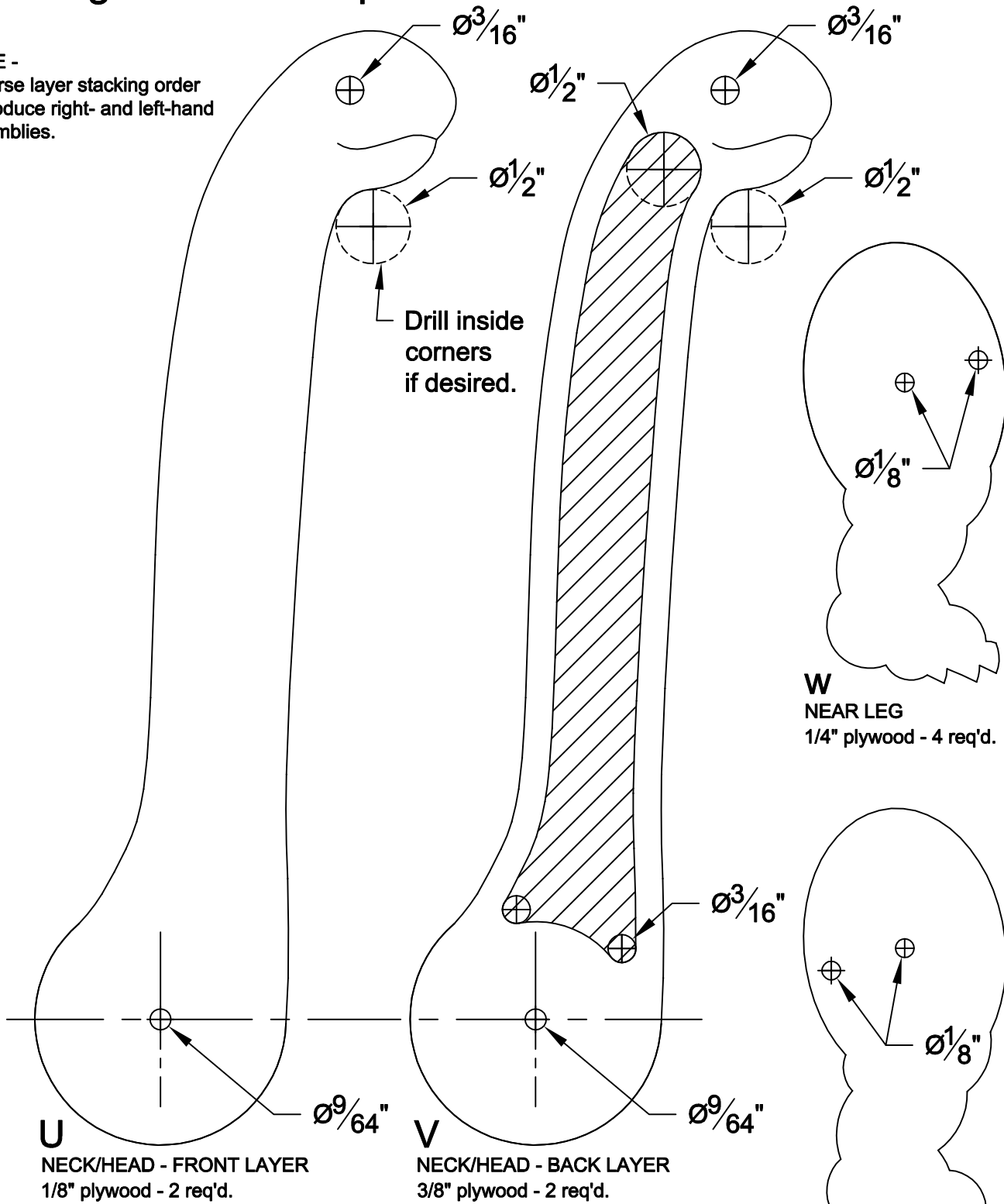
P
TREE BASE - LARGE
3/8" plywood - 1 req'd.



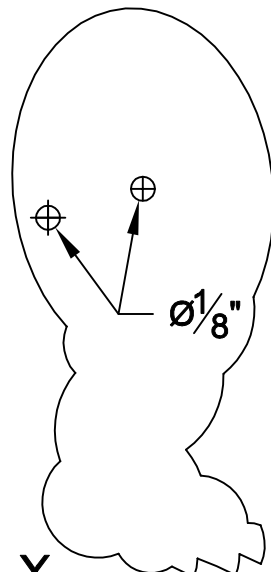
Q
TREE BASE - SMALL
3/8" plywood - 1 req'd.

Browsing Brontos Lamp

NOTE -
Reverse layer stacking order
to produce right- and left-hand
assemblies.



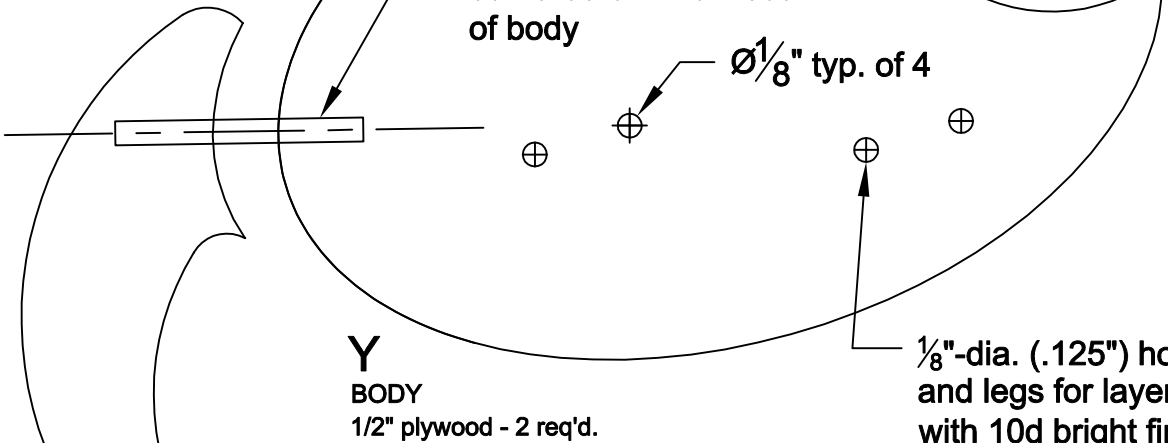
W
NEAR LEG
1/4" plywood - 4 req'd.



X
FAR LEG
1/4" plywood - 4 req'd.

Z
TAIL
1/4" plywood - 2 req'd.

R
1/8" dowel
centered on thickness
of body



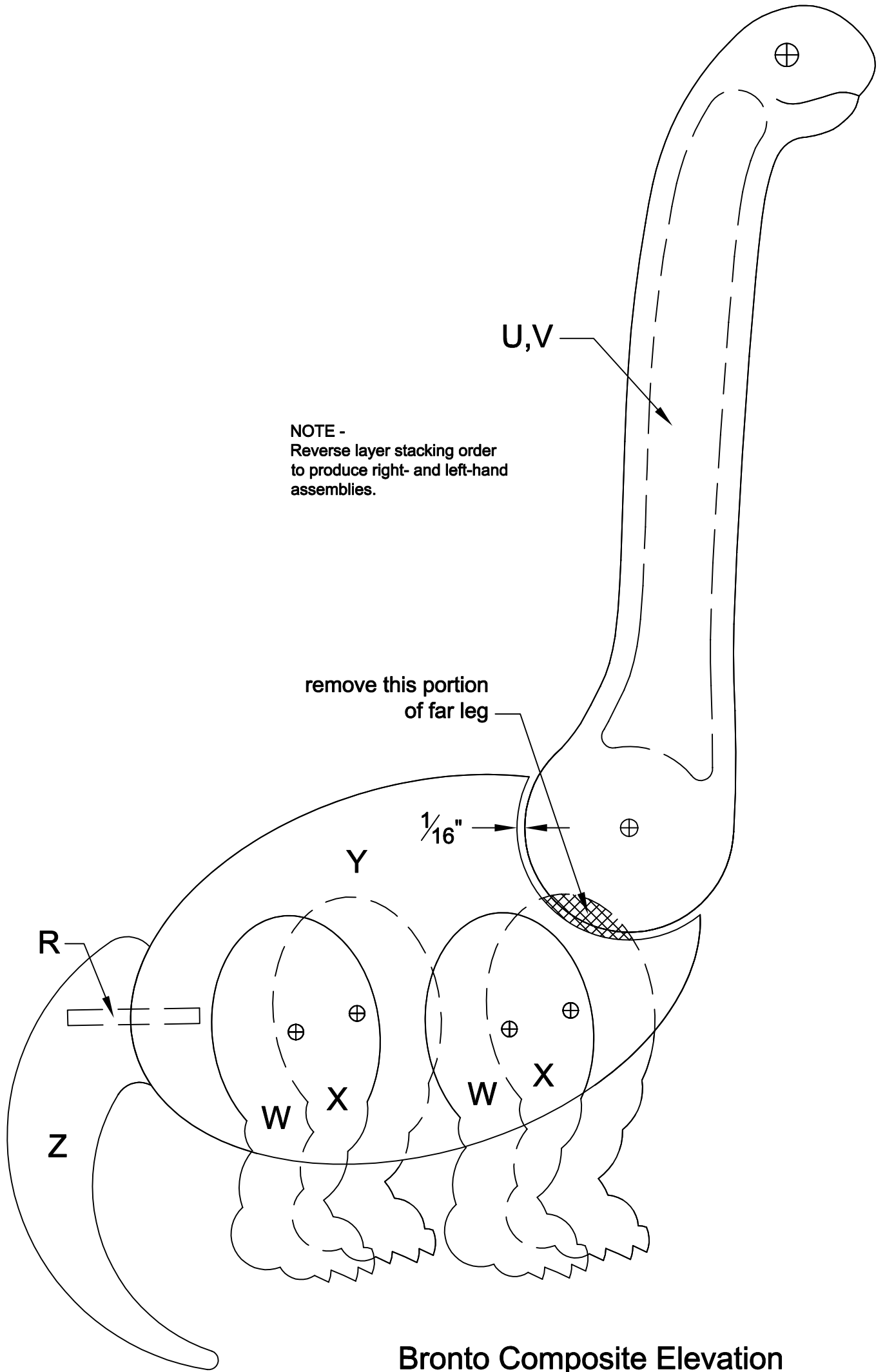
Y
BODY
1/2" plywood - 2 req'd.

1/8"-dia. (.125") holes in body
and legs for layer alignment
with 10d bright finish nails (.120")

Following glue-up, cap outside
holes with 1/8"-dia. dowel.

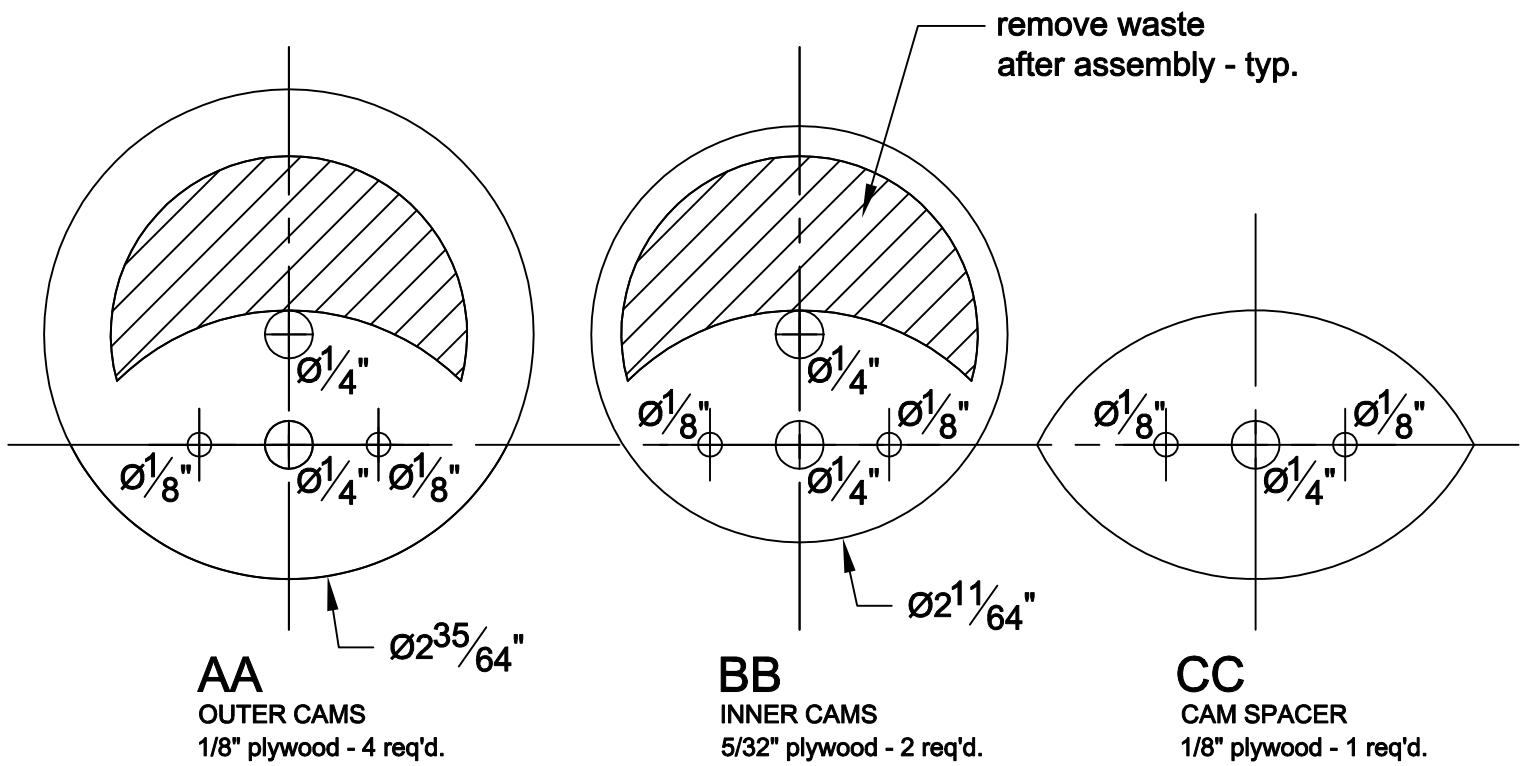
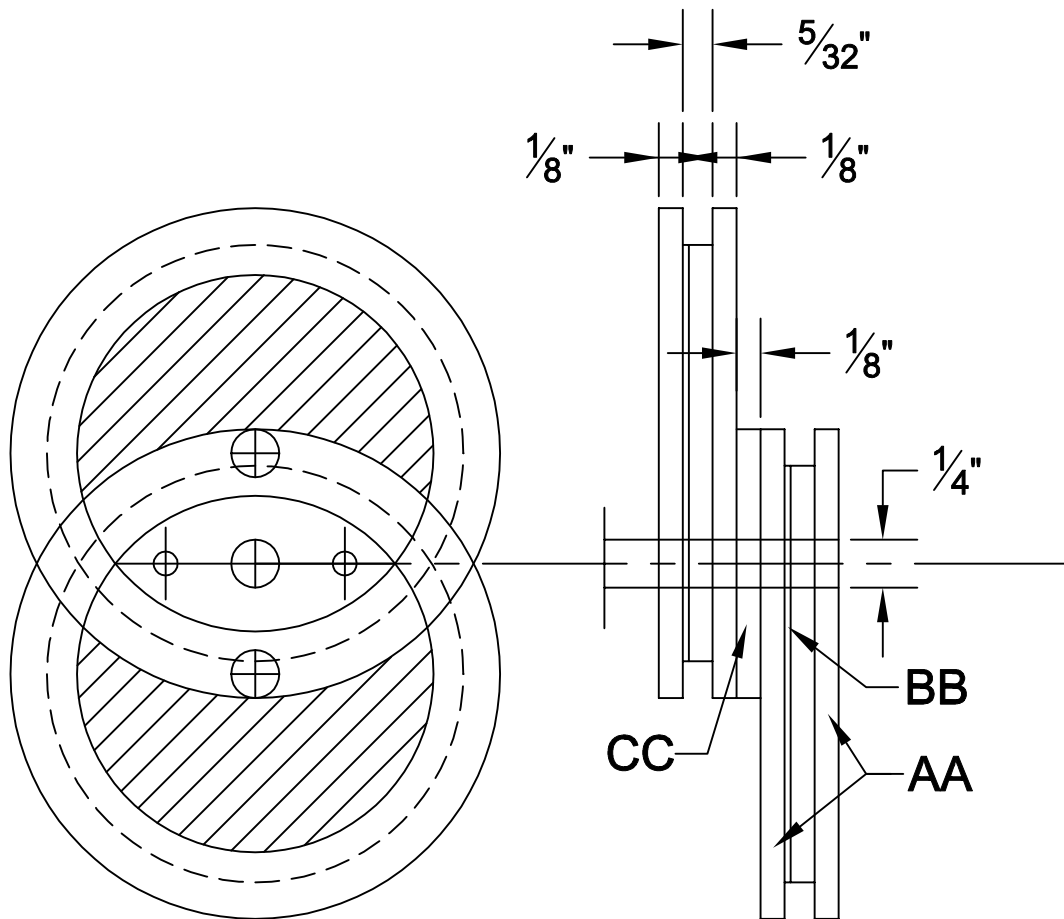
Bronto Body Parts

Browsing Brontos Lamp



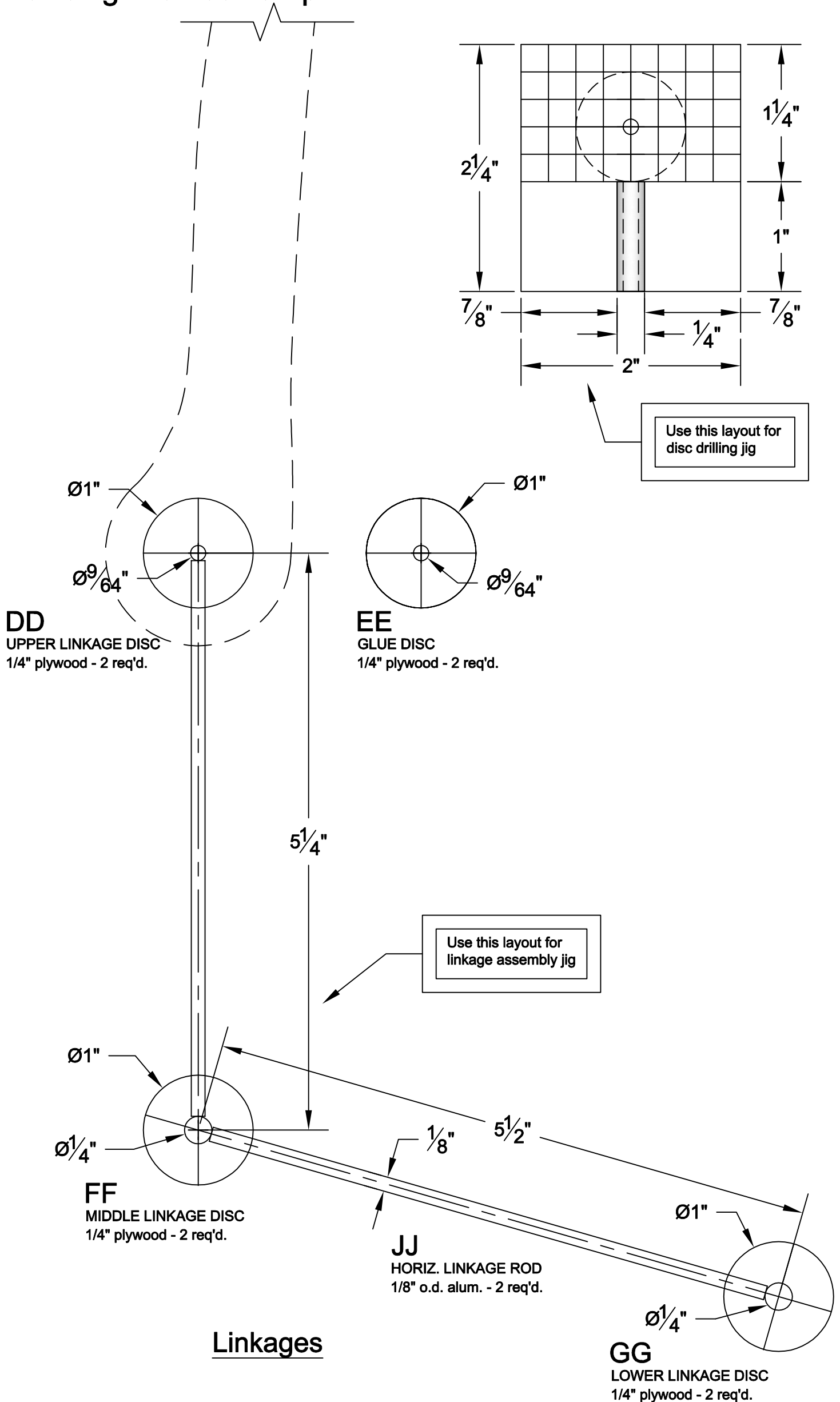
Bronto Composite Elevation

Browsing Brontos Lamp



Cams

Browsing Brontos Lamp



Browsing Brontos Lamp

