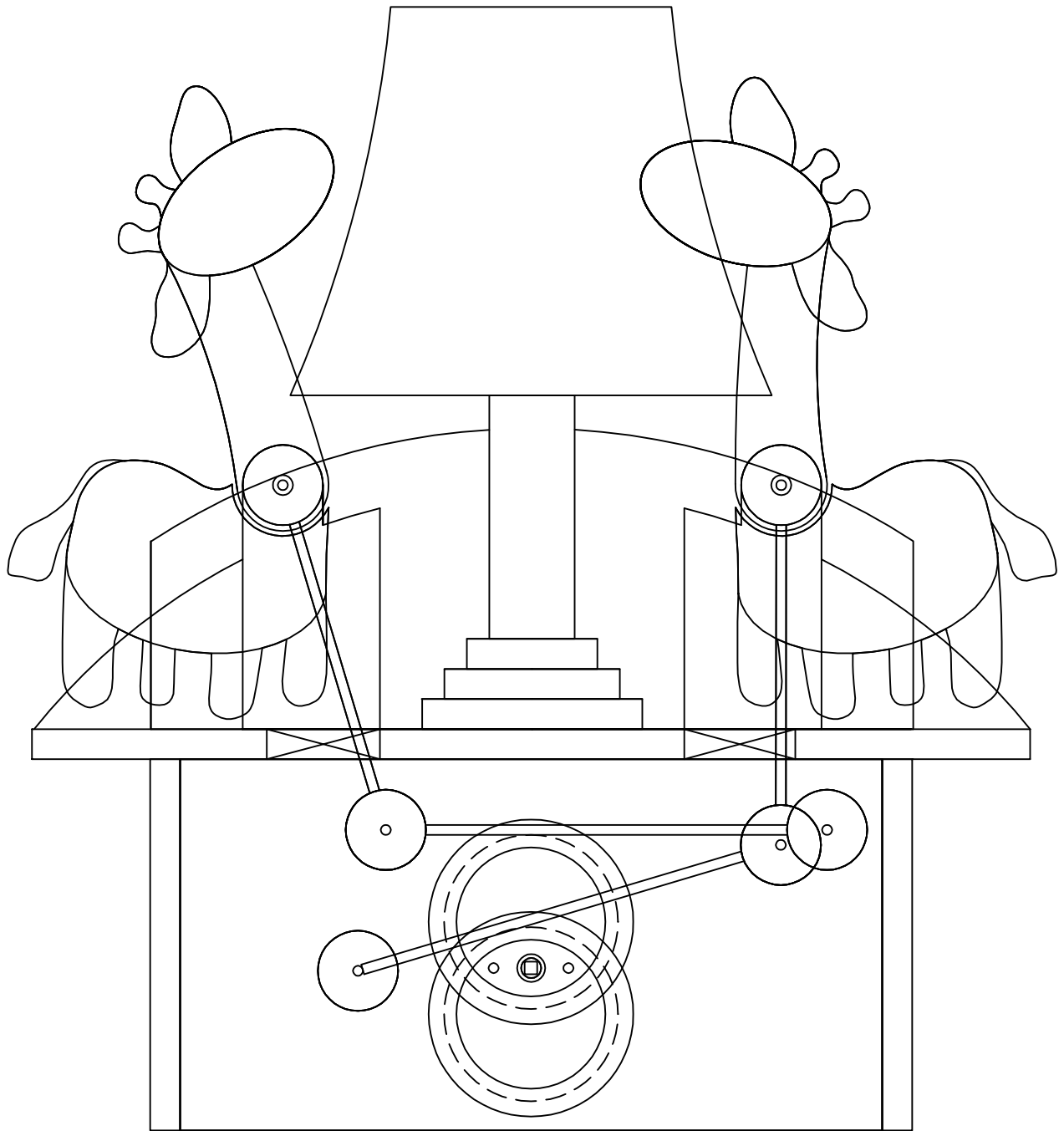


Browsing Giraffes Lamp



Overall Elevation

Half Full Scale

Browsing Giraffes Lamp					
	Object	Material	#	Note	Size
A	top	3/8" plywood	1		6" x 12-7/16"
B	motherboard	1/4" hardwood	1		4-5/8" h. x 8-3/4" w.
C	motor	-----	1	N1	-----
D	threaded spacer	nylon	1	N2	1/2" dia. x 1/2" long
E	vibration isolation pad	1/16" gasket stock	2		1" x 1"
F	slab leg	3/8" hardwood	2		4-5/8" h. x 5" w.
G	blocking	1/2" square dowel	4		4-5/8" long
H	axle support - large	3/8" plywood	2		per full-size plan
J	axle support - small	3/8" plywood	2		per full-size plan
K	machine screw	steel	1		1/4-20 x 1-1/4"
L	unthreaded spacer	nylon	3	N3	1/4" o.d. x 1" long
M	axle	1/8" aluminum rod	2		2-1/2" long
N	background	3/8" plywood	1		3-3/4" h. x 9 1/2" w.
P	tree base - large	3/8" plywood	1		2-3/4" dia.
Q	tree base - medium	3/8" plywood	1		2-3/16" dia.
R	tree base - small	3/8" plywood	1		1-5/8" dia.
S	tree trunk	3/4" PVC pipe	1	N4	length to suit
T	light bulb socket - candelabra	-----	1		3/4" dia.
U	head/neck – layer 1	1/8" plywood	2		per full-size plan
V	head/neck – layer 2	1/8" plywood	2		per full-size plan
W	head/neck – layer 3	3/8" plywood	2		per full-size plan
X	head/neck – layer 4	1/8" plywood	2		per full-size plan
Y	body – front layer	1/4" plywood	2		per full-size plan
Z	body – back layer	1/4" plywood	2		per full-size plan
AA	cam disc - large	1/8" plywood	4		per full-size plan
BB	cam disc - small	5/32" plywood	2	N5	per full-size plan
CC	cam spacer	1/8" plywood	2		per full-size plan
DD	upper linkage disc	1/4" plywood	2		1" dia.
EE	glue disc	1/4" plywood	2		1" dia.
FF	middle linkage disc	1/4" plywood	2		1" dia.
GG	lower linkage disc	1/4" plywood	2		1" dia.
HH	upper linkage rod	1/8" aluminum rod	2		4-1/2" long
JJ	lower linkage rod	1/8" aluminum rod	2		5-1/2" long
KK	back	1/4" pegboard	1		4-5/8" h. x 8-3/4" w.
LL	stop bead	hardwood	2		3/8" dia.
MM	lock washer	steel	1	N6	1/4"
NN	washers used as body shims	steel or nylon	--		1/4"
PP	fender washer	steel or nylon	1		1/4" x 1" dia.
QQ	switch			N7	to suit
RR	lamp cord		1		to suit

Notes:

N1 - continuous-duty timing motor, 110V AC, 15- to 20-rpm

N2 - 1/4-20 interior threads

N3 - 9/64" interior diameter

Use one in drilling jig. Cut other two as required to serve as 1/4"-long axle bushings.

N4 - 1-1/16" outside diameter Forstner bit recommended for holes

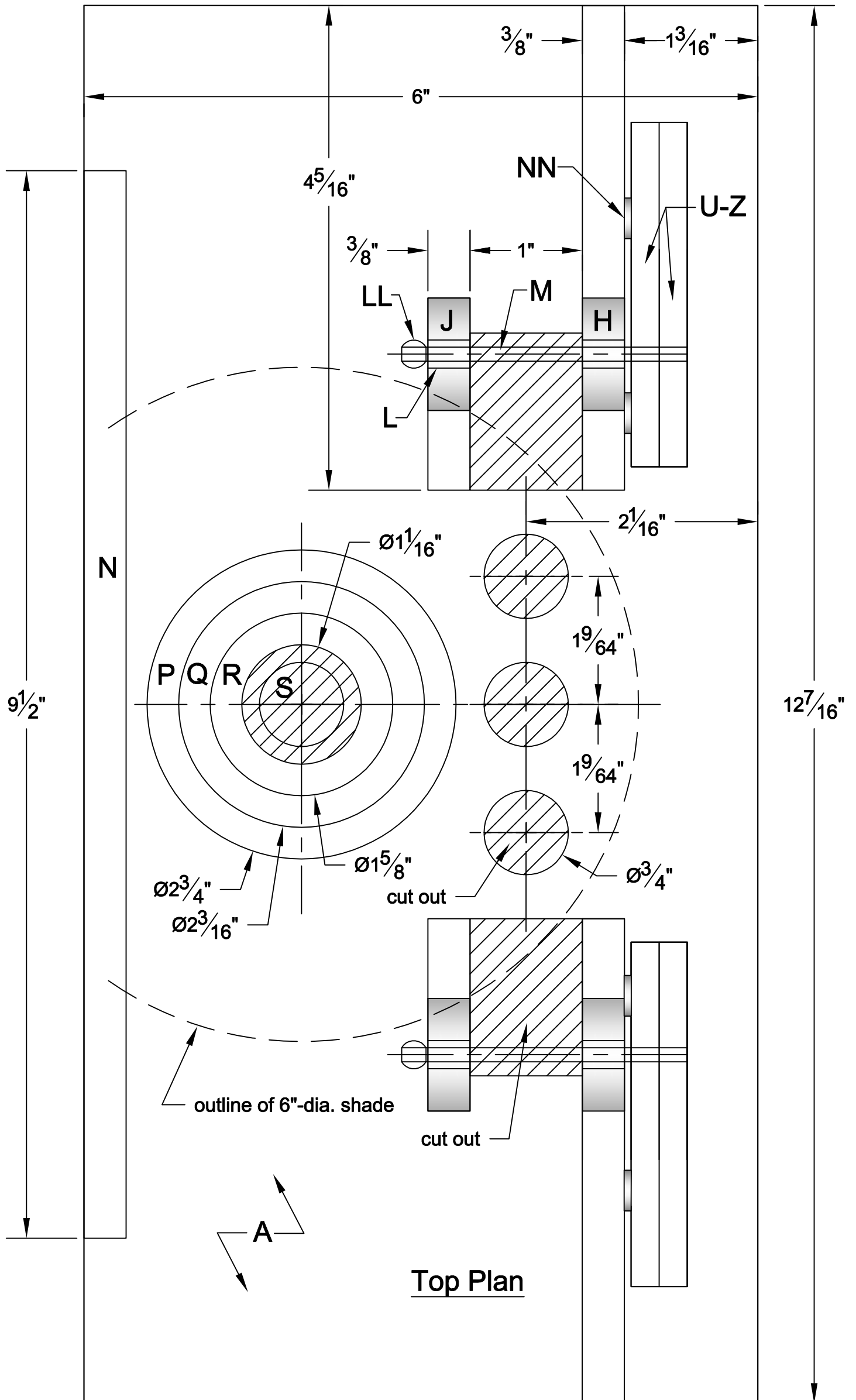
N5 - 5/32" plywood = 1/8" + 1/32" plywood laminations

N6 - external toothed for better grip in plywood

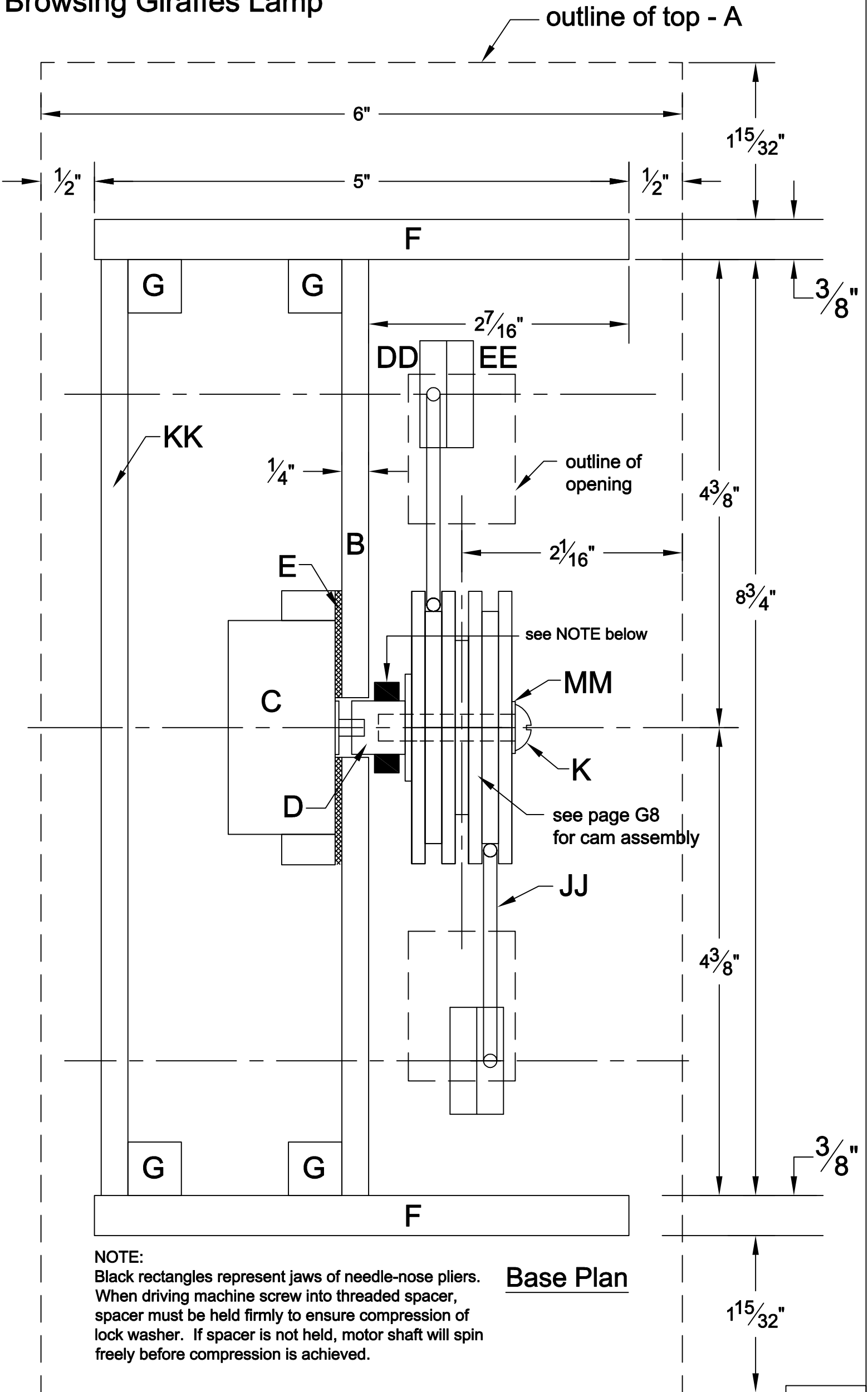
N7 - multiple options for switching:

- unswitched for use with a switched outlet
- in-line lamp cord switch
- one rotary switch on side to activate bulb and motor simultaneously
- two rotary switches on side to activate bulb and motor independently
- one 3-way rotary switch on side to activate bulb and motor independently

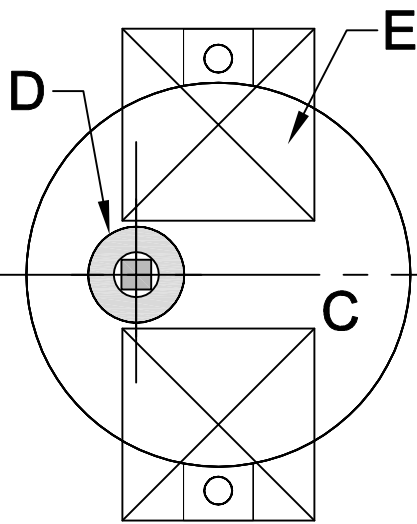
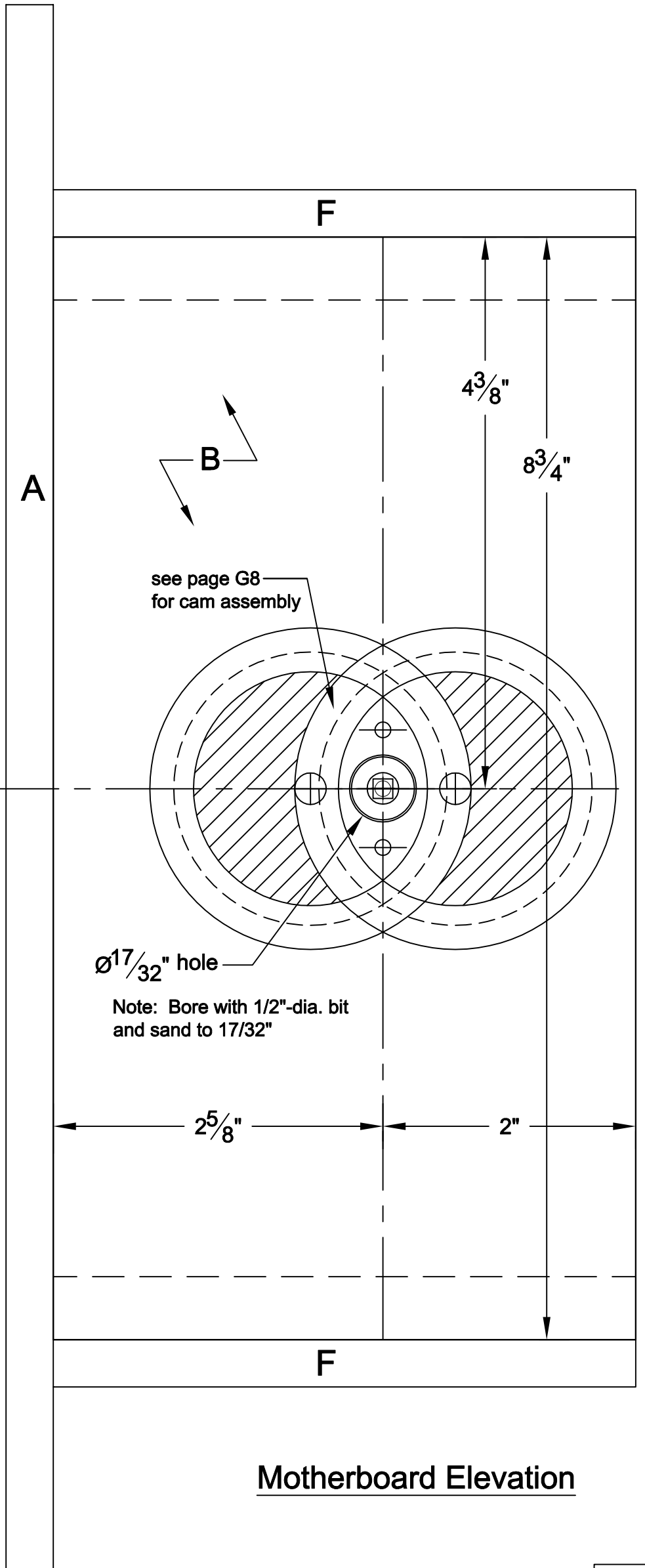
Browsing Giraffes Lamp



Browsing Giraffes Lamp



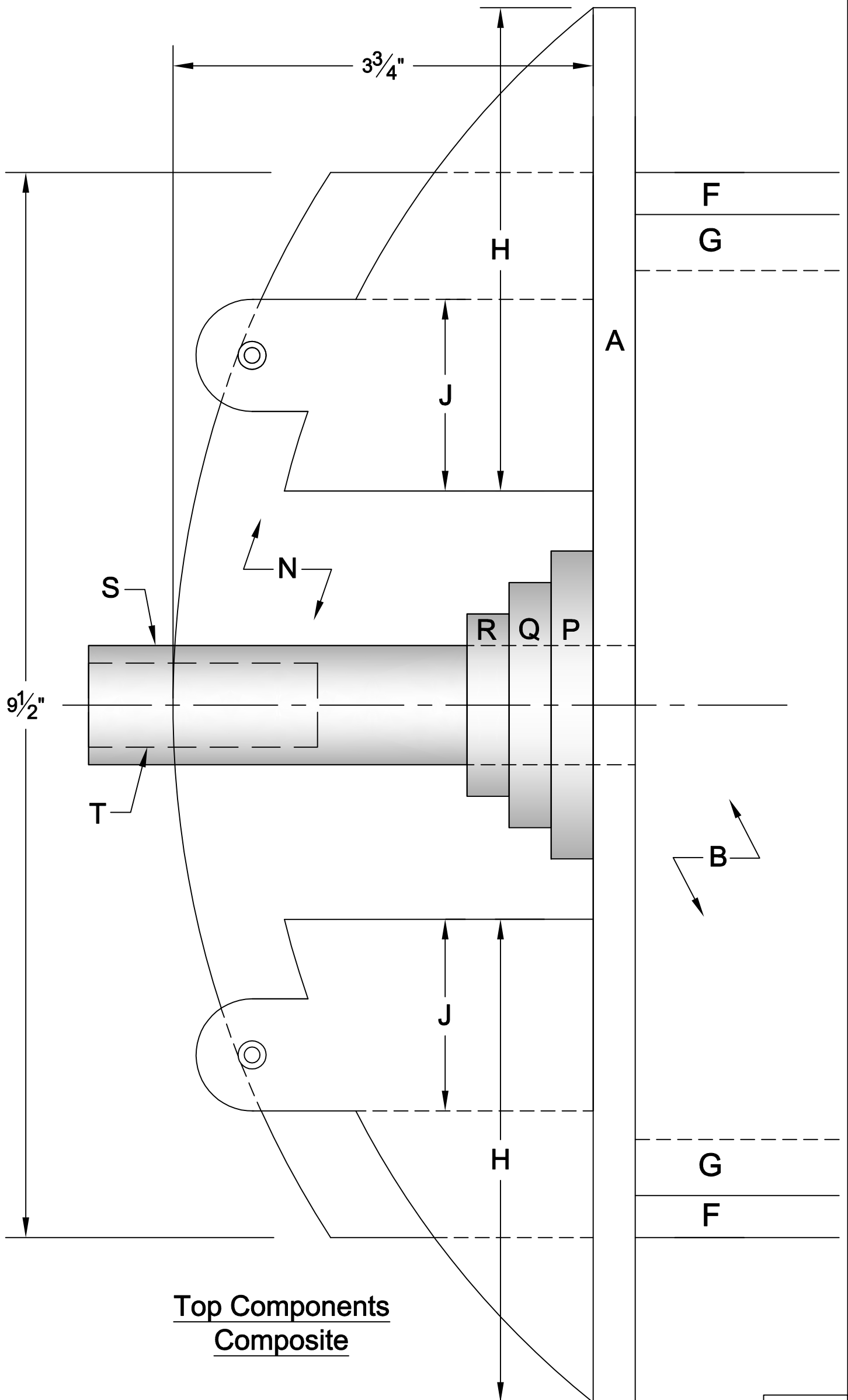
Browsing Giraffes Lamp



Motor Assembly

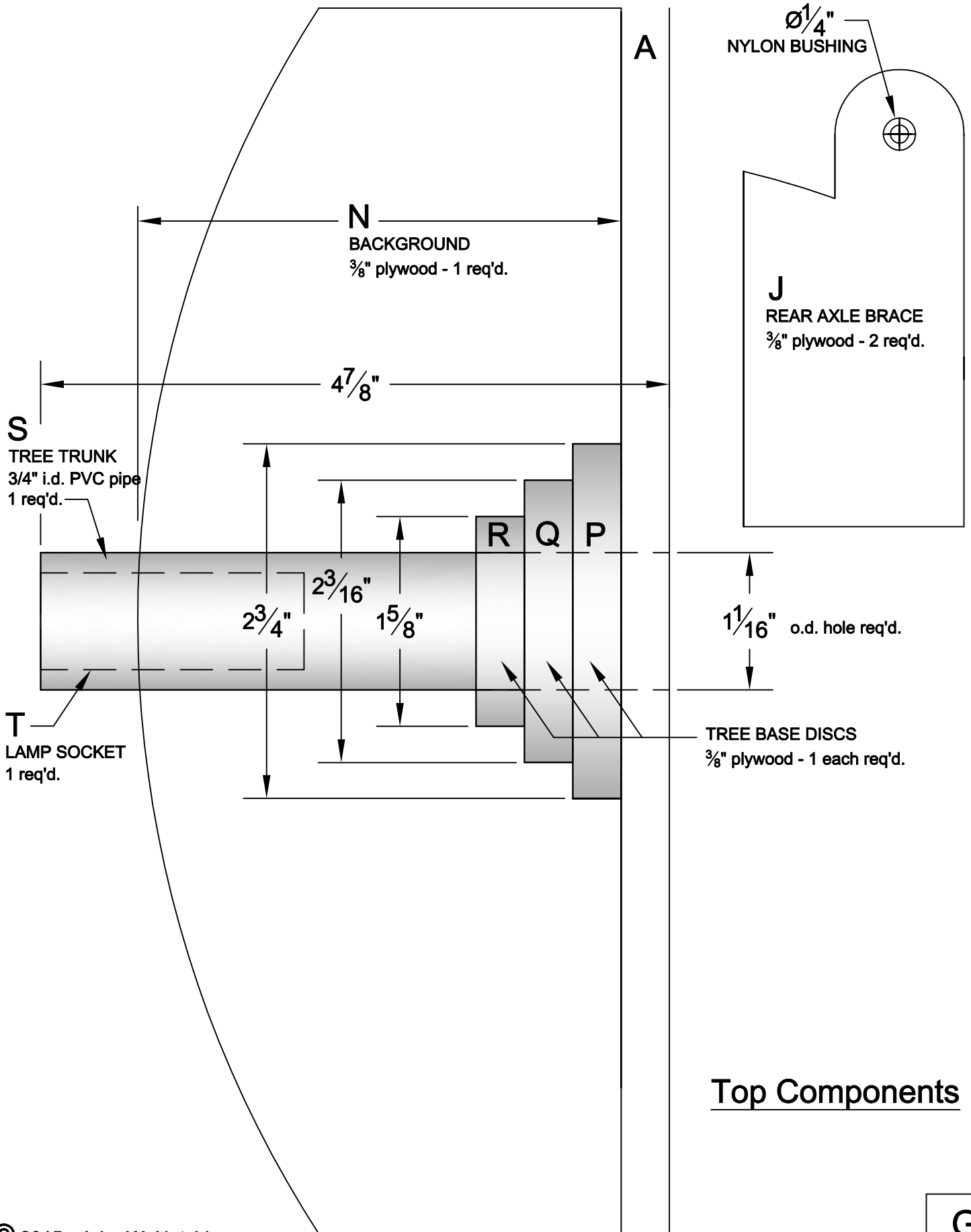
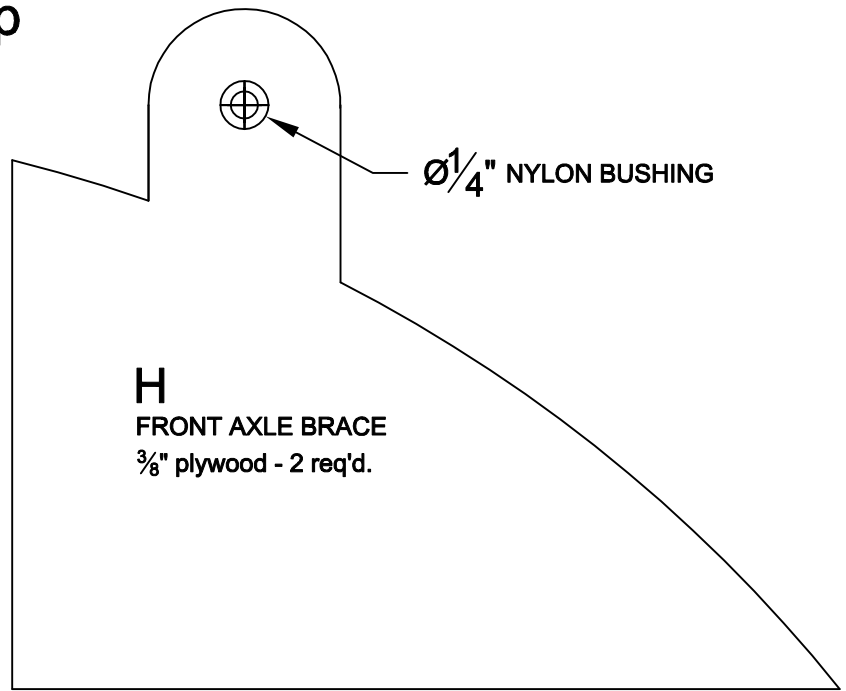
Motherboard Elevation

Browsing Giraffes Lamp

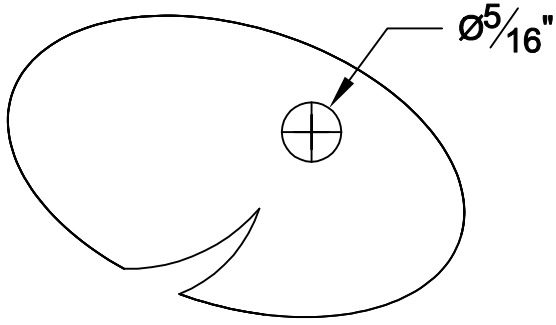


Top Components
Composite

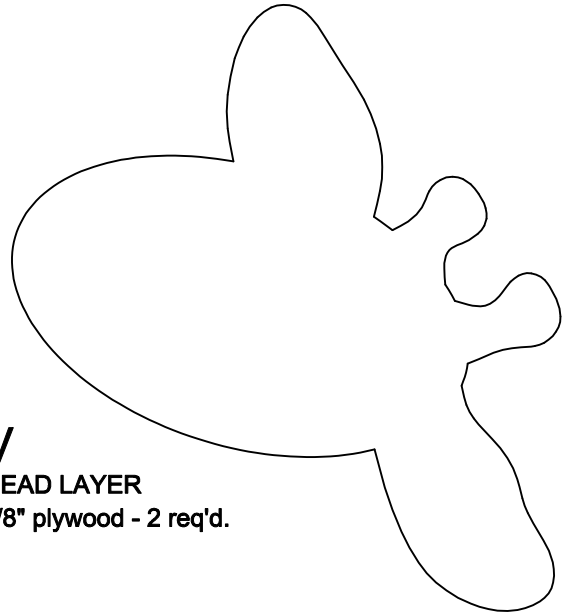
Browsing Giraffes Lamp



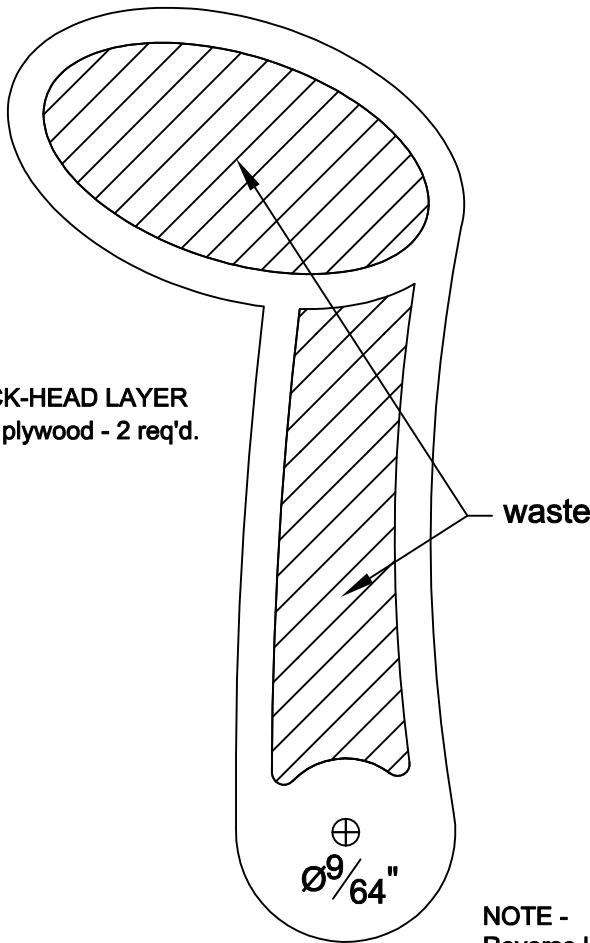
Browsing Giraffes Lamp



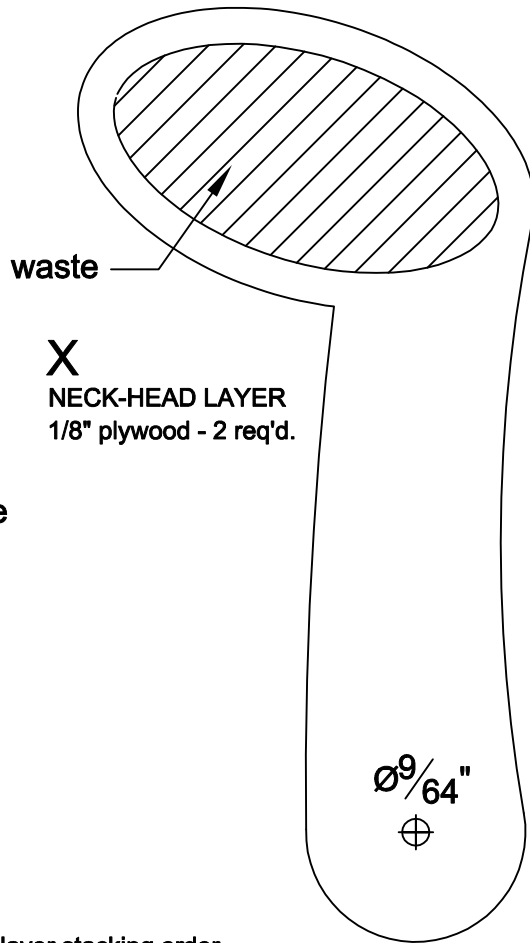
U
HEAD LAYER
1/8" plywood - 2 req'd.



V
HEAD LAYER
1/8" plywood - 2 req'd.

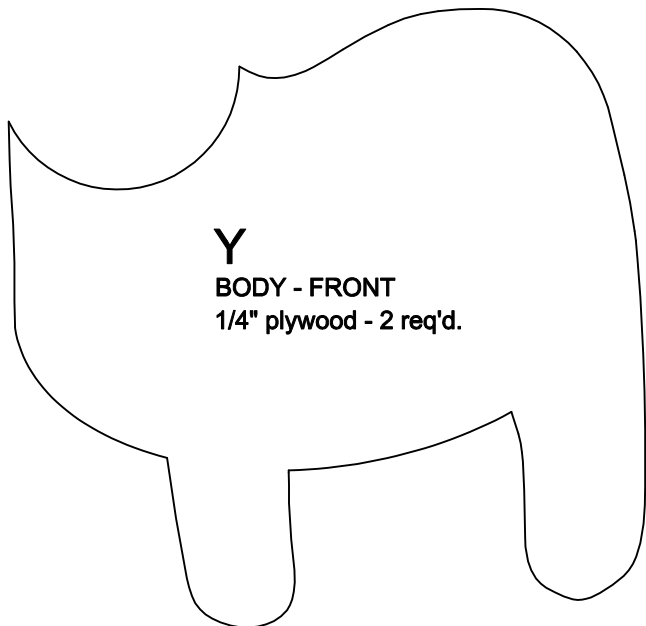


W
NECK-HEAD LAYER
3/8" plywood - 2 req'd.

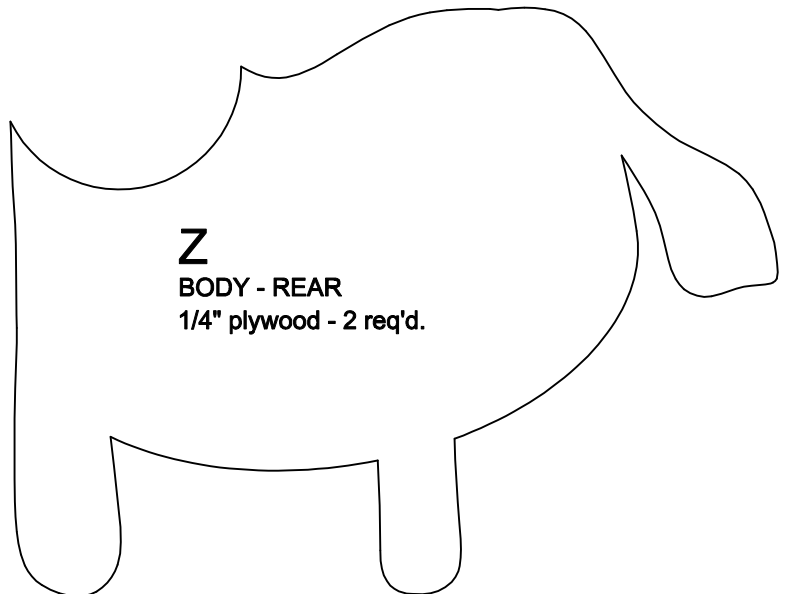


X
NECK-HEAD LAYER
1/8" plywood - 2 req'd.

NOTE -
Reverse layer stacking order
to produce right- and left-hand
assemblies.



Y
BODY - FRONT
1/4" plywood - 2 req'd.

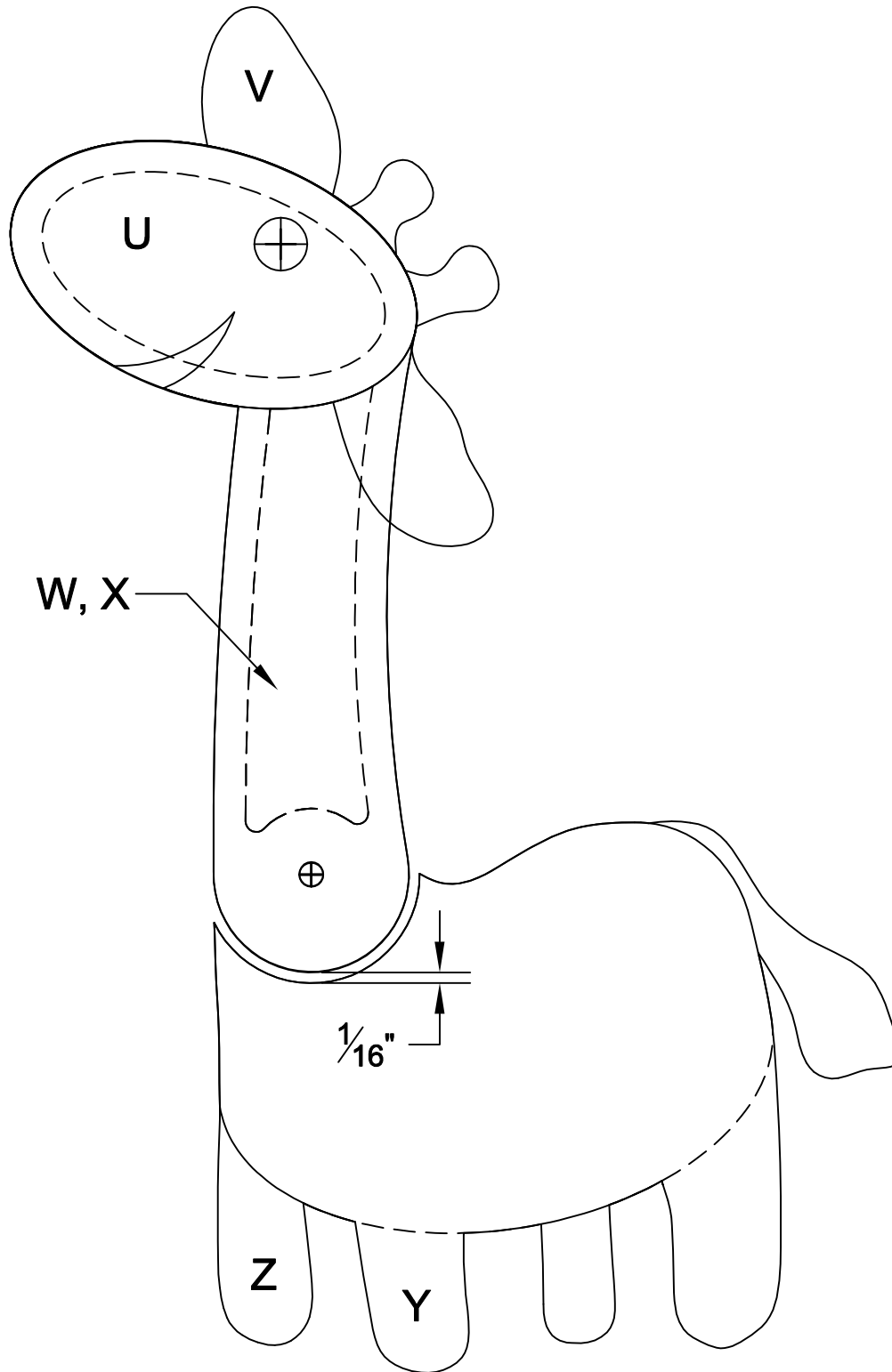


Z
BODY - REAR
1/4" plywood - 2 req'd.

Giraffe Body Parts

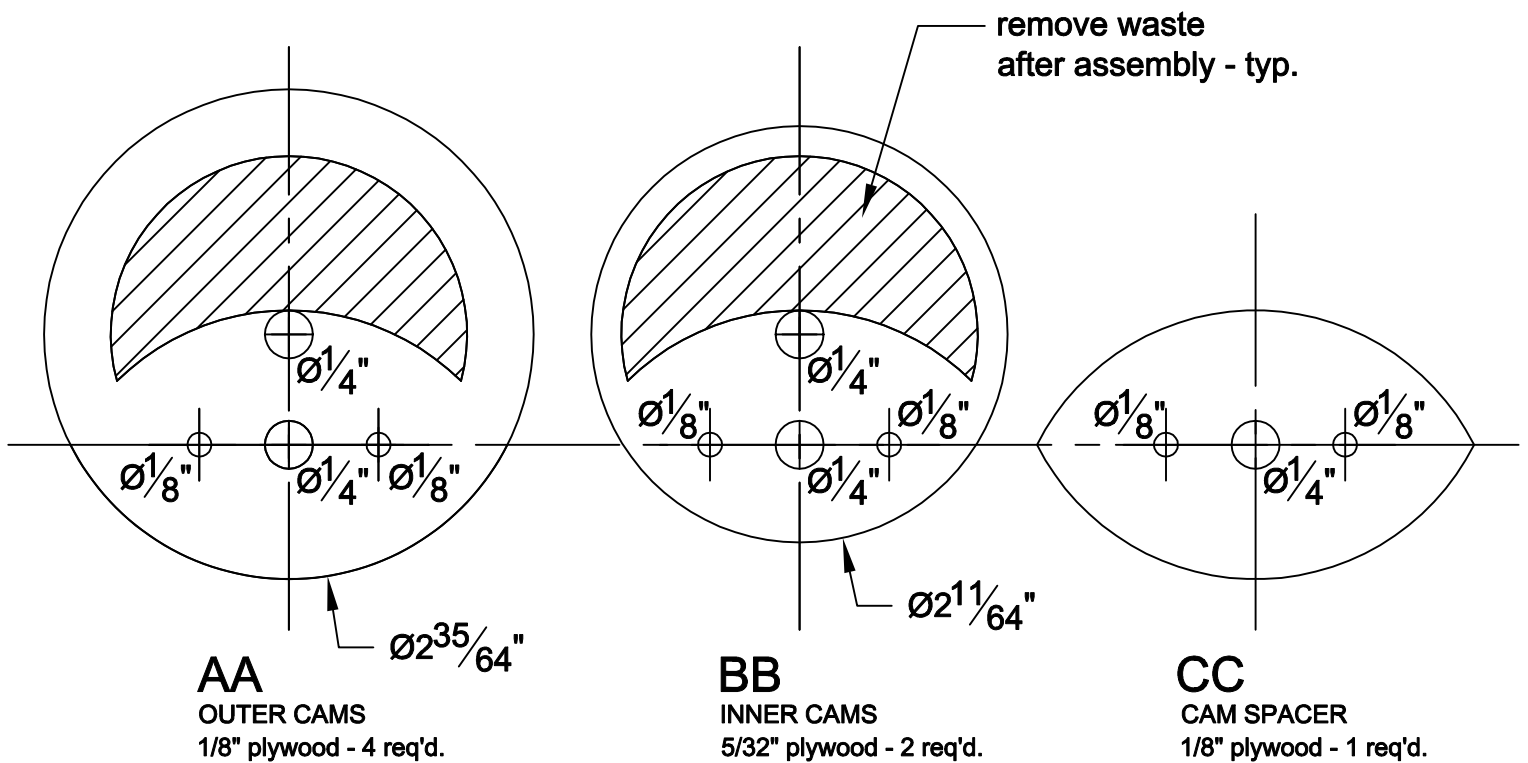
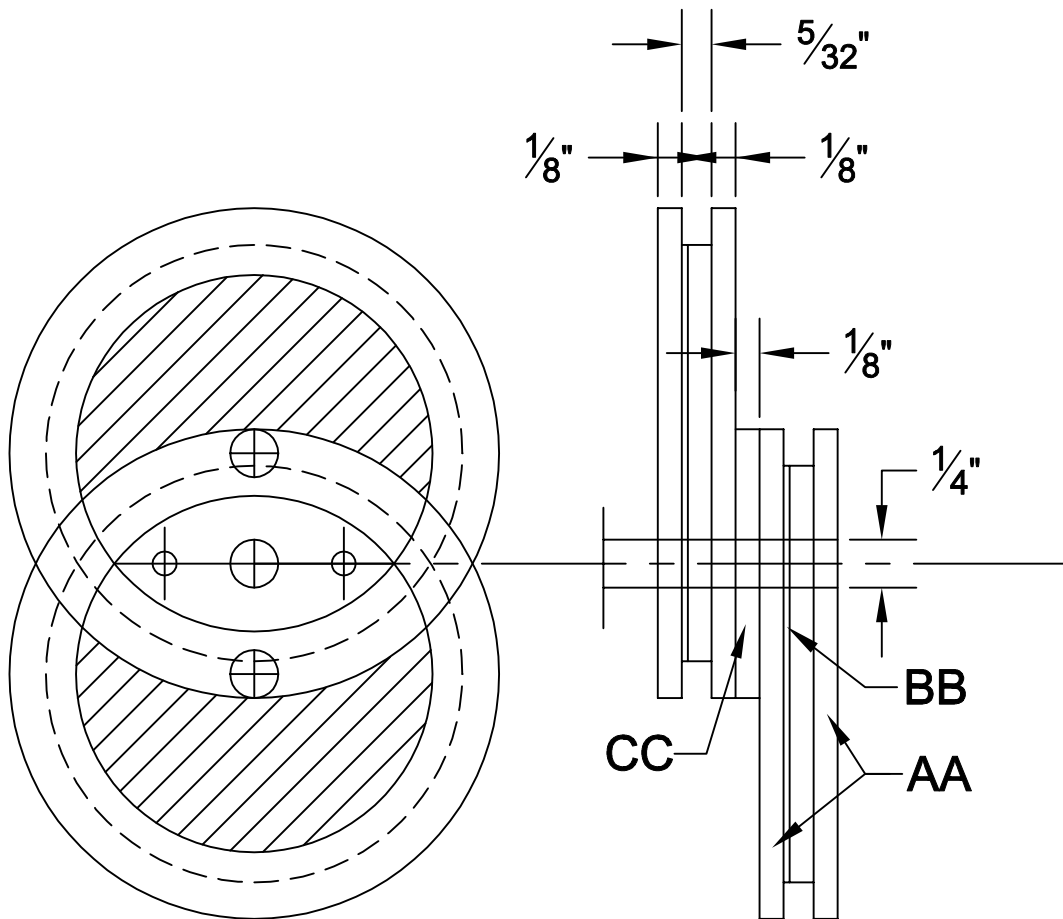
Browsing Giraffes Lamp

NOTE -
Reverse layer stacking order
to produce right- and left-hand
assemblies.



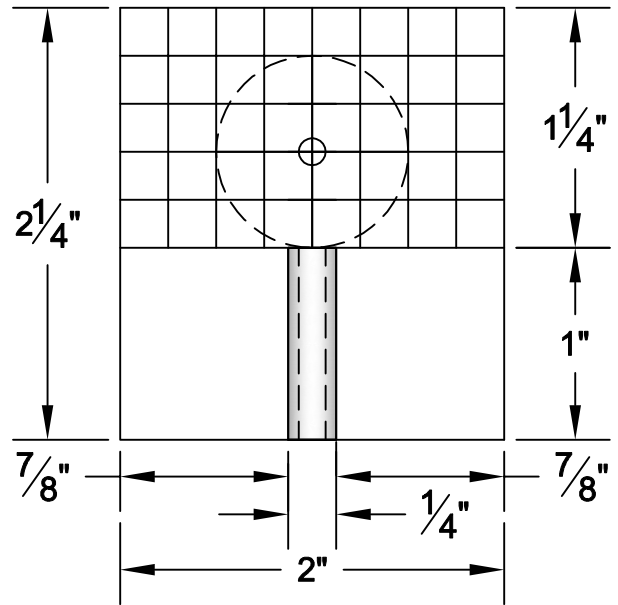
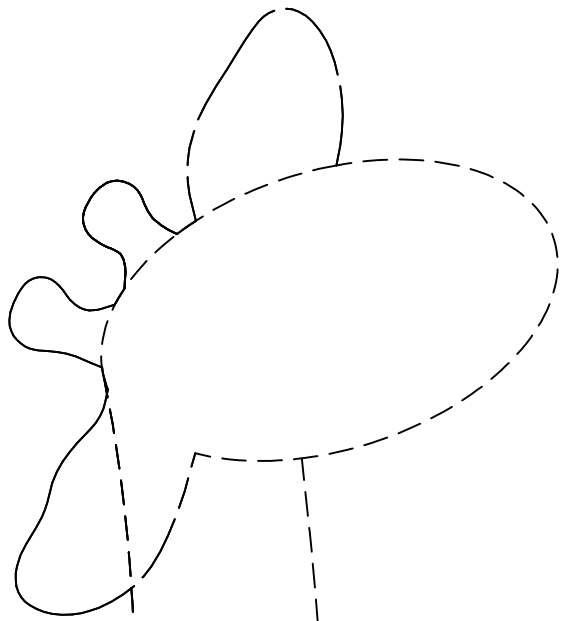
Giraffe Composite Elevation

Browsing Giraffes Lamp

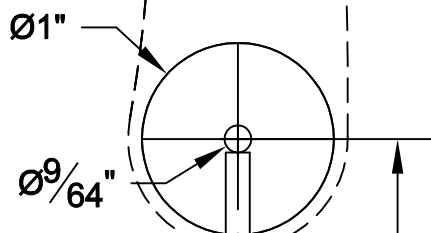


Cams

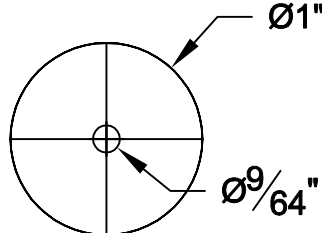
Browsing Giraffes Lamp



Use this layout for disc drilling jig



DD
UPPER LINKAGE DISC
1/4" plywood - 2 req'd.



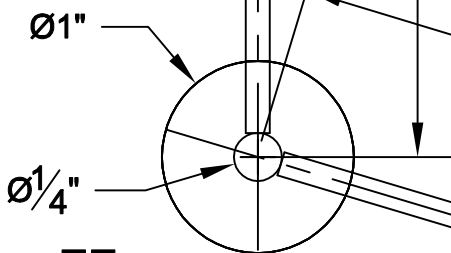
EE
GLUE DISC
1/4" plywood - 2 req'd.



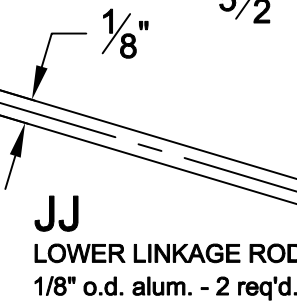
HH
UPPER LINKAGE ROD
1/8" o.d. alum. - 2 req'd.

4 1/2"

Use this layout for linkage assembly jig

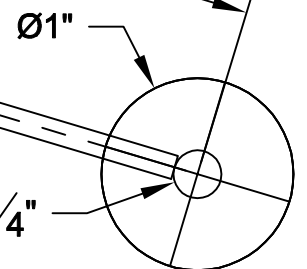


FF
MIDDLE LINKAGE DISC
1/4" plywood - 2 req'd.



JJ
LOWER LINKAGE ROD
1/8" o.d. alum. - 2 req'd.

Linkages



GG
LOWER LINKAGE DISC
1/4" plywood - 2 req'd.

Browsing Giraffes Lamp

